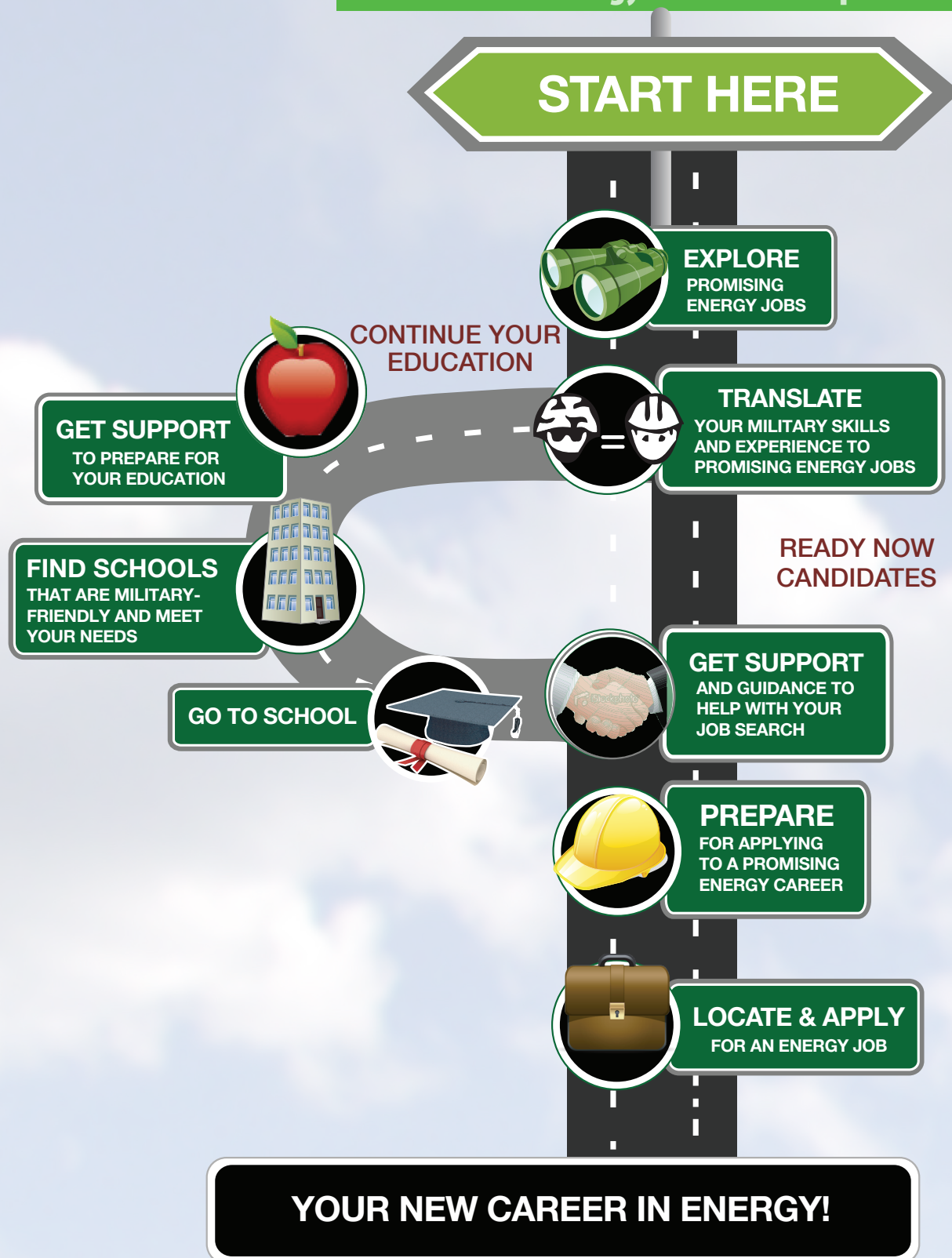


VETERAN FACT SHEET

Military Enlisted Ratings/MOS's
Energy Power Plant Operators



To get additional information on the Roadmap and how
to find an energy job, go to the Troops to Energy Jobs website:
www.troopstoenergyjobs.com

VETERAN FACT SHEET

SPECIALIZATION Relevant Military Training	COMPARABLE ENERGY JOBS	TYPICAL UTILITY TITLES	JOB RESPONSIBILITIES
<div> <div>Navy – EM-Electrician's Mate</div> <div>Navy – EM(NUC)-Electrician's Mate (Nuclear)</div> <div>Navy – EN-Engineman</div> <div>Navy – GSM-Gas Turbine System Technician Mechanical</div> <div>Navy – GSE-Gas Turbine System Technician Electrical</div> <div>Navy – MM-Machinist's Mate</div> <div>Army – 12P Prime Power Production Specialist</div> <div>Army – 52E – Power Station Operator</div> </div>	<div> <div>Generation Power Plant Operator</div> </div>	<div> <div>POWER PLANT OPERATOR</div> <div>MAINTENANCE OPERATOR TRAINEE</div> <div>OPERATOR TRAINEE</div> <div>AUXILIARY EQUIPMENT OPERATOR</div> </div>	<div> <div>Operate and maintain power station equipment including:</div> <ul style="list-style-type: none"> • Inspecting, operating, and monitoring equipment used in the production of electricity • Performing daily routine operations • Isolating/tagging equipment for maintenance and valve operations • Performing maintenance on major industrial equipment such as pumps, turbines, and power station mechanical equipment • Performing maintenance on batteries, motors, switchgear, motor operated valves, and other power station electrical equipment </div>